

# ETCON

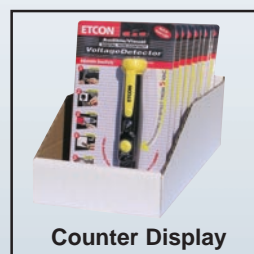
**Voice & Video Distribution  
Data Networking  
Structured Wiring Centers  
Voltage and Continuity Testers  
Non-Contact Voltage Testers  
Arc Fault Testers  
Circuit Tracers  
Wire Sorters and Length Meters  
Splice Kits & Shrink Tubing  
Landscape Lighting Posts**

**ETCON Corporation**  
7750 Grant Street • Burr Ridge, IL 60527  
Phone (630) 325-6100 Fax (630) 325-6838  
www.etcon.com E-mail: info @etcon.com

**Boost Sales with our convenient  
product display cases**



**Floor Display**



**Counter Display**

## **Product Display Cases**

Etcon offers a full line of displays for all of our products. Floor and Counter displays can be custom filled with any product desired. Attractive throw away easels for weeks of effective counter exposure that require minimum space are also available. Please contact us for more information or simply let us know your needs.

**Contact your local  
sales representative for  
more information or call  
(630) 325-6100.**

## **Sales Representatives**

For further information on the full line of **ETCON** electrical products, contact your nearby sales representative.

### **ALABAMA**

J. Leonard & Associates  
Pell City, AL 35125  
Phn: 205-365-0945

### **ALASKA**

ETCON Corp.  
Burr Ridge, IL 60527  
Phn: 800-367-4119  
Fax: 800-336-6838

### **ARIZONA**

ITL Enterprises  
Oro Valley, AZ 85737  
Phn: 888-429-1142  
Fax: 888-429-1143

### **ARKANSAS**

Porter of Arkansas  
Little Rock, AR 72211  
Phn: 501-225-7925  
Fax: 501-225-7513

### **CALIFORNIA, SOUTHERN**

Tri-Electric Sales  
Orange, CA 92665  
Phn: 866-874-9998  
Fax: 704-921-0150

### **CALIFORNIA, NORTHERN**

Scott Lee Enterprises  
Placerville, CA 95667  
Phn: 530-644-0666  
Fax: 530-644-0886

### **COLORADO**

ASA Electrical  
Evergreen, CO 80439  
Phn: 303-918-8101  
Fax: 303-679-1315

### **CONNECTICUT**

Frank Associates  
Webster, MA 01570  
Phn: 508-943-3188  
Fax: 508-943-3688

### **DELAWARE, NORTHERN**

Walker Sales Associates  
Middletown, PA 17057  
Phn: 717-939-1344  
Fax: 717-939-1345

### **DELAWARE, SOUTHERN**

Marty Hansen & Co.  
Baltimore, MD 21237  
Phn: 410-665-3300  
Fax: 410-665-0540

### **FLORIDA, S.E.**

R. C. Sales Technologies, Inc.  
Sunrise, FL 33322  
Phn: 954-572-6746  
Fax: 954-572-6753

### **FLORIDA, NORTHERN**

Coast to Coast Electrical  
Sales  
Altamonte Spgs, FL 32701  
Phn: 407-331-1687  
Fax: 407-331-3496

### **FLORIDA, PAN HANDLE**

J. Leonard & Associates.  
Pell City, AL 35125  
Phn: 205-365-0945

### **GEORGIA**

Peachstate Sales Agency  
Albany, GA 31707  
Phn: 229-888-9292  
Fax: 229-888-7787

### **HAWAII**

Luce Associates  
Ewa Beach, HI 96706  
Phn: 808-681-3334  
Fax: 808-681-5525

### **IDAHO, SOUTHERN**

ETCON Corp.  
Burr Ridge, IL 60527  
Phn: 800-367-4119  
Fax: 800-336-6838

### **IDAHO, NORTHERN**

Pacific Coastal Sales  
Seattle, WA 98108  
Phn: 206-625-1766  
Fax: 206-682-0841

### **ILLINOIS, SOUTHERN**

Cooper Elec. Sales  
St. Louis, MO 63123  
Phn: 314-843-9800  
Fax: 314-843-8655

### **ILLINOIS, NORTHERN**

Single Source Sales  
Elk Grove Village, IL 60007  
Phn: 847-439-5030  
Fax: 847-439-5035

### **INDIANA**

Alexander Agency  
Zionsville, IN 46077  
Phn: 317-873-3681  
Fax: 317-873-2630

### **IOWA**

Omaha Midwest Sales  
Omaha, NE 68137  
Phn: 402-691-0504  
Fax: 402-691-0503

### **KANSAS**

South Wind Sales and Mkt.  
Quenemo, KS 66528  
Phn: 785-759-3227  
Fax: 785-759-3370

### **KENTUCKY**

Heats Agency  
Harrodsburg, KY 40330  
Phn: 859-734-818  
Fax: 859-734-0849

### **LOUISIANA**

ETCON Corp.  
Burr Ridge, IL 60527  
Phn: 800-367-4119  
Fax: 800-336-6838

### **MAINE**

Frank Associates  
Webster, MA 01570  
Phn: 508-943-3188  
Fax: 508-943-3688

### **MARYLAND**

Marty Hansen & Co.  
Baltimore, MD 21237  
Phn: 410-665-3300  
Fax: 410-665-0540

### **MASSACHUSETTS**

Frank Associates  
Webster, MA 01570  
Phn: 508-943-3188  
Fax: 508-943-3688

### **MICHIGAN**

Flaherty Sales  
Novi, MI 48375  
Phn: 248-473-1750  
Fax: 248-473-1750

### **MICHIGAN, WESTERN**

WKS Sales  
Fraser, MI 48026  
Phn: 248-591-7950  
Fax: 248-591-7955

### **MINNESOTA**

Lee Noonan Company  
Mounds View, MN 55112  
Phn: 763-560-1228  
Fax: 763-560-3282

### **MISSISSIPPI**

ETCON Corp.  
Burr Ridge, IL 60527  
Phn: 800-367-4119  
Fax: 800-336-6838

### **MISSOURI, EASTERN**

Cooper Elec. Sales  
St. Louis, MO 63123  
Phn: 314-843-9800  
Fax: 314-843-8655

### **MISSOURI, WESTERN**

South Wind Sales and Mkt.  
Quenemo, KS 66528  
Phn: 785-759-3227  
Fax: 785-759-3370

### **MONTANA**

McDowall Agency  
Billings, MT 59101  
Phn: 406-245-3854  
Fax: 406-245-3017

### **NEBRASKA**

Omaha Midwest Sales  
Omaha, NE 68137  
Phn: 402-691-0504  
Fax: 402-691-0503

### **NEVADA, SOUTHERN**

ITL Enterprises  
Oro Valley, AZ 85737  
Phn: 888-429-1142  
Fax: 888-429-1142

### **NEVADA, NORTHERN**

Scott Lee Enterprises  
Placerville, CA 95667  
Phn: 530-644-0666  
Fax: 530-644-0886

### **NEW HAMPSHIRE**

Frank Associates  
Webster, MA 01570  
Phn: 508-943-3188  
Fax: 508-943-3688

### **NEW JERSEY, SOUTH-ERN**

Walker Sales Associates  
Middletown, PA 17057  
Phn: 717-939-1344  
Fax: 717-939-1345

### **NEW JERSEY, NORTH-ERN**

Crest Electrical Sales  
Staten Island, NY 10312  
Phn: 718-317-9040  
Fax: 718-317-9025

### **NEW MEXICO**

ITL Enterprises  
Oro Valley, AZ 85737  
Phn: 888-429-1142  
Fax: 888-429-1142

### **NEW YORK CITY**

Crest Electrical Sales  
Staten Island, NY 10312  
Phn: 718-317-9040  
Fax: 718-317-9025

### **NEW YORK, UPSTATE**

RD Wright, Inc.  
Greenville, NY 12083  
Phn: 518-966-5980  
Fax: 518-966-5981

### **NORTH CAROLINA**

AJE Reps, LLC  
Charlotte, NC 28206  
Phn: 704-335-3410  
Fax: 704-335-3411

### **NORTH DAKOTA**

Lee Noonan Co.  
Mounds View, MN 55112  
Phn: 763-560-1228  
Fax: 763-560-3282

### **OHIO, SOUTHERN**

Cooper Elec. Sales  
Cincinnati, OH 45212  
Phn: 513-351-7800  
Fax: 513-351-9333

### **OHIO, NORTHERN**

D C Electrical Sales  
Wadsworth, OH 44281  
Phn: 330-336-5110  
Fax: 330-336-1495

### **OKLAHOMA**

Electrical Resources  
Jenks, OK 74037  
Phn: 918-518-5950  
Fax: 918-518-5951

### **OREGON**

Pacific Coastal Sales  
Seattle, WA 98108  
Phn: 206-625-1766  
Fax: 206-682-0841

### **PENNSYLVANIA, WEST**

ETCON Corp.  
Burr Ridge, IL 60527  
Phn: 800-367-4119  
Fax: 800-336-6838

### **PENNSYLVANIA, EAST**

Walker Sales Associates  
Middletown, PA 17057  
Phn: 717-939-1344  
Fax: 717-939-1345

### **RHODE ISLAND**

Frank Associates  
Webster, MA 01570  
Phn: 508-943-3188  
Fax: 508-943-3688

### **SOUTH CAROLINA**

AJE Reps, LLC  
Charlotte, NC 28206  
Phn: 704-335-3410  
Fax: 704-335-3411

### **TENNESSEE**

Bailey-Martin & Associates  
Nashville, TN 37203  
Phn: 615-256-3000  
Fax: 615-726-1058

### **TEXAS**

Kopinitz Co.  
Houston, TX 77018  
Phn: 713-692-0022  
Fax: 713-699-9419

### **UTAH**

ETCON Corp.  
Burr Ridge, IL 60527  
Phn: 800-367-4119  
Fax: 800-336-6838

### **VERMONT**

Frank Associates  
Webster, MA 01570  
Phn: 508-943-3188  
Fax: 508-943-3688

### **VIRGINIA**

Jay Sales, Inc.  
Richmond, VA 23236  
Phn: 804-378-7872  
Fax: 804-378-8270

### **WASHINGTON**

Pacific Coastal Sales  
Seattle, WA 98108  
Phn: 206-625-1766  
Fax: 206-682-0841

### **WASHINGTON DC**

Marty Hansen & Co.  
Baltimore, MD 21237  
Phn: 410-665-0540  
Fax: 410-665-0540

### **WISCONSIN**

M & M Elec. Sales  
Kaukauna, WI 54130  
Phn: 920-766-7703  
Fax: 920-766-0524

### **WYOMING**

ASA Electrical  
Evergreen, CO 80439  
Phn: 303-918-8101 Fax: 303-679-1315

### **CANADA**

ETCON Corp.  
Burr Ridge, IL 60527  
Phn: 800-367-4119  
Fax: 800-336-6838

# ETCON

ELECTRICAL / VOICE / VIDEO / DATA

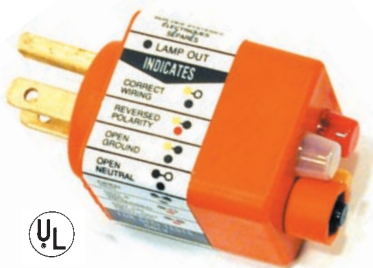


Get Connected With Etcon





# TESTERS

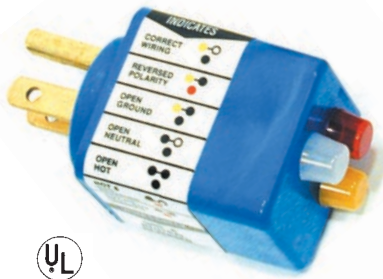


## CT101 Receptacle/GFCI Tester Combined

Performs three tests with one installation

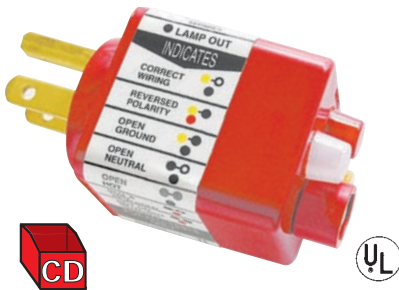
- Tests conventional or GFCI protected 120 VAC outlets for correct wiring.
- Tests GFCI protected outlets to insure against trip at 2 mA.
- Tests GFCI protection to insure trip mechanism function at 5 milliamp level (actual test level is 6.8 milliamp)

## CT111 Economy Grade GFCI Receptacle Tester



## CT102 Receptacle Tester

- Checks correct wiring for 15 or 20 amp, 120 VAC single-phase 3-wire receptacles.



## AF120 Receptacle/AFCI Breaker Tripper

- Test any standard or AFCI protected 120 volt 3 wire receptacle for proper wiring.
- Lights indicate correct or faulty receptacle wiring.
- Push button AFCI test.
- Trips AFCI breakers from remote location.
- Does not simulate an actual arc.

**AF120-CD 10 AF120 IN COUNTER DISPLAY**



## ARC100 AFCI Tester

- Tests any standard 15/20 amp 3 wire receptacle for proper wiring
- Tests any AFCI protected receptacle by simulating an actual parallel arc between line and neutral
- Tests any GFCI protected receptacle
- Tests "ground and neutral reversal" for AFCI and GFCI circuits (prevents nuisance tripping when a load is applied)
- Made in USA
- UL LISTED Control #1L36 File #E136836



## RT 300 Continuity Tester/Flashlight Combined

- Added convenience of a handy, durable flashlight.
- Uses two AA penlight size batteries (not included).
- Made of heavy brass, copper-nickel plated for superior electrical characteristics.
- Insulated clip prevents accidental shorting to case.
- Alligator clip has 36" lead with plug.
- Rugged, full-size pocket clip for convenient carrying.



## KT500 Continuity Tester

- All plastic-insulated against accidental discharge.
- Protected 1 1/2" test probe. Built-in lamp.
- Rugged alligator clip 36" test lead.
- Uses two AA penlight size batteries (not included).



## VT200 Voltage Tester-Neon Type

- Compact. Fits in tight spaces.
- High visibility neon voltage indicator: 120, 208 to 240, 440 to 600 VAC: 120, 240, 400, 600 VDC.
- Positive or negative DC pole identified by neon lamps.
- Provision for quick prod storage in case.
- Case serves as prod holder for one-hand operation.
- Replaceable probe tips.
- Continuous duty rated through 480V.
- Dimensions: 4 9/16" x 2 1/16" x 7/8"
- Made in U.S.A.
- VT200LL Heavy Duty leather case.



## RL400 Right-Light™ Tester

- For circuits rated from 5 to 50 VAC/DC.
- Long probes, 24" leads.
- High visibility incandescent lamp.
- Compact size fits any shirt pocket.
- Made in U.S.A.



## RL401 Right-Light™ Tester

- For circuits rated from 3 to 28V AC/DC.
- Unique tri-colored LED with DC polarity test.
- Compact design with shirt pocket clip.
- All plastic with insulated safety grips.
- Dimensions 6" long.
- Made in U.S.A.
- Same as RL400 except voltage range 80 to 600V AC/DC.



## RL403 Right-Light™ Tester

- For circuits rated from 80 to 600V AC/DC.
- Unique tri-colored LED with DC polarity test.
- High visibility neon lamp indicator.
- Compact design with shirt pocket clip.
- All plastic with insulated safety grips.
- Dimensions 6" long.
- Made in U.S.A.



# TESTERS



## VT150 Voltage Tester-Solenoid Type

- Dual voltage indication: Solenoid vibration sensing and electronic neon.
- Positive AC/DC voltage identification: 120, 240, 480, 600 VAC 60/50 Hz, 120, 240, 600 VDC.
- Positive or negative DC pole identified by neon lamp.
- Replaceable leads.
- Retractable and locking, spring loaded shrouds protecting metal probes.
- Durable metal probes capable of piercing insulation covered conductors.
- Self-extinguishing, high impact sealed case and prod assemblies preventing dirt, dust and small objects from entering the tester.
- Provisions for quick prod storage in case.
- Case serves as prod holder for one-handed operation.
- Test lead strain relief assembly.
- Made in U.S.A.
- VT150LL Heavy duty leather case.



## VT159 Digital Voltage/Continuity Tester with Built-In Non-Contact Tester

- 2 - 600 VAC/DC
- Audible and Visual Indications
- Retractable Probe
- Data Hold
- Auto/Manual Range
- Conforms to the IEC1010-1/Cat111 600V
- Auto Power Off
- Includes Case and Batteries (2AAA)

**VT159-CD** 10 VT159 IN COUNTER DISPLAY



## VT154 Audible Voltage Continuity Tester-Solenoid Type

- Three voltage indications: Solenoid vibration sensing, electronic neon, visual indication and audible buzzer.
- Positive AC/DC voltage identification: 6 to 600 Volts 60/50 Hz.
- Automatic testing for continuity through 300k ohms.
- Electronic buzzer indication for AC/DC voltage and continuity.
- Positive or negative DC pole identified by neon lamp.
- Replaceable leads.
- Retractable and locking, spring-loaded shrouds protecting metal probes.
- Durable metal probes capable of piercing insulation covered conductors.
- Self-extinguishing, high impact sealed case and prod assemblies preventing dirt, dust and small objects from entering the tester.
- Includes A76 batteries.
- Provisions for quick prod storage in case.
- Case serves as prod holder for one handed operation.
- Test lead strain relief assembly.
- Made in U.S.A.
- VT154LL Heavy duty leather case.
- VT154B Replacement batteries.



## VT168 Non-Contact/Flashlight with Continuity and Adjustable Sensitivity

- 5 - 1000 VAC
- Adjustable Sensitivity
- Audible and Visual Indications
- Detects Faulty Grounds
- Continuity Tester
- Polarity Check
- Shirt Pocket Clip
- Includes Batteries (4-A76)

**VT168-CD** 10 VT168 IN COUNTER DISPLAY



## VT157 "proVolt" Digital Audible Voltage/Continuity Tester-Solenoid Type

- Digital display 10 to 600 VAC/DC 2% accuracy.
- Solenoid vibration voltage indication.
- Audible tone for continuity and voltage.
- Replaceable leads with retractable shrouds.
- Operated by line voltage.
- Batteries energize continuity buzzer only, for safe voltage testing.
- Miniature size.
- Prod storage for two handed testing.
- Prod storage for one handed testing of standard 120 VAC receptacles.
- Design for bench top reading.
- Continuous duty rated.
- Patent pending.
- Made in U.S.A.



## VT160 "Volt Stik" Non-Contact Voltage Tester

- "Volt Stik" detects voltage from 25 to 122,000 VAC, without any physical connections.
  - "Volt Stik" indicates voltage with audible and visual signals.
  - Low range: 25 VAC to 1500 VAC.
  - High range: 1500 VAC to 122,000 VAC.
  - Made in the U.S.A.
- Hold tip of "Volt Stik" to possible voltage source and switch the unit to the correct range. Listen and look for indication.
- Low Range: "Volt Stik" will start to "tic" and the LED will light if there is greater than 25 VAC.
- High Range: "Volt stik" will start to "tic" and the LED will light if there is greater than 1500 VAC.



# CIRCUIT TRACERS / SPECIALTY TESTERS



## CP115 "proTrace™"

- Circuit tracer
- Quickly and easily traces branch circuits.
- Easy to read LED display.
- Not affected by line noise including computer, dimmers, etc.
- Works on lines with 24-300 VAC.
- Includes "proTrace Receiver", transmitter, instructions and carrying case.
- Made in U.S.A.



## CT107 Tone Generator

- Tone mode generates an alternating (700 Hz-1300Hz) or continuous (1000Hz) signal which is sensed with a CT108 Tone Tracer for insulated conductors or a handset for bare conductors.
- Provides talk power for handsets on "dead" line circuits during installation.
- Tests continuity to 10K ohms and voltage from 5 to 48 volts AC/DC.
- Provides polarity (tip and ring side) indication of the central office battery at the protector or modular outlets.
- Made in U.S.A.



## CT108 Tone Tracer

- Receives tone generated by CT107
- Equipped with internal speaker, no handset required.
- Handset connections present for use in noisy areas.
- Made in U.S.A.



## CH110 "proTrace™"

- Multiple circuit tracer
- Quickly traces up to 5 circuits simultaneously.
- Easy to read digital signal strength indicator.
- Not affected by line noise including computers, dimmers, etc.
- Works on lines with 24-300 VAC.
- Can be used to trace lines through walls, underground etc.
- Includes "proTrace" Receiver, 2 transmitters (can add 3 more transmitters, etc.), carrying case, batteries (4-9 volt) and owners manual.
- Made in U.S.A.

### Additional Part Numbers:

- |         |               |
|---------|---------------|
| CH110-3 | Transmitter 3 |
| CH110-4 | Transmitter 4 |
| CH110-5 | Transmitter 5 |



## CP117 "proAuto Track™"

- Circuit tracer.
- No sensitivity dials.
- Automatically identifies branch circuits.
- Works on lines with 90-200 VAC.
- Includes "proAuto Track Receiver", transmitter and instructions.
- Made in U.S.A.

**CP117-CD** 10 CP117 IN COUNTER DISPLAY



## LT130 Gas Lamp Voltage Tester

It performs a complete lighting fixture test which includes lighting the lamp with no power connection.

The LT130 tests the following lamps:

- Fluorescent bulb.
- Metal halide bulbs.
- Mercury vapor bulbs.
- High and low pressure sodium bulbs.
- Neon bulbs.

### Features:

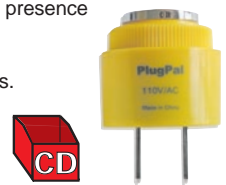
- Audible voltage indication 5/12/24/48/120/208 to 240/277/440 to 600VAC/DC.
- Audible continuity to 100k ohms.
- Test ballast capacitors, diodes, igniters and photoelectric controls.
- Telescoping antenna that fully retracts into the housing.
- Prod holder for two-handed operation.
- Replaceable antenna.
- Separate battery compartment.
- Neoprene voltage lead and alligator clip assemblies.

### Unit includes:

- Leather carrying case, lead assemblies and owners manual.
- Made in U.S.A.

## CT105 Audible Circuit Tracer

- Audible buzzer indicates presence of 120 volts AC.
- Economical way of identifying branch circuits.
- Buzzing sound can be heard in multi-level houses.
- Continuous duty rated.



**CT105-CD** 10 CT105 IN COUNTER DISPLAY

**FREE  
Display  
Case**

See back cover  
for details



# SPECIALTY TESTERS/MISCELLANEOUS



## WS144 Wire Sorter

The ETCON WS144 Wire Sorter quickly sorts up to 30 wires at a time WITHOUT REQUIRING A KNOWN GROUND PATH.

The WS144 makes sorting a one-person operation. Attach the numbered leads to one end of de-energized wires. Attach identifier unit leads at opposite end to receive immediate LCD display of wire number.

- WS144 sorts up to 30 wires with no known ground path.
- Maximum wire length based on 250 ohm maximum load: 24 awg 1 mile, 12 awg 14.9 miles.
- Field replaceable 9 volt alkaline batteries.
- Operating temperature 0°C - 40°C (32°F - 104°F).
- Open circuit and short circuit indication.
- Includes identifier unit, remote unit for wires, 1-15 leads, carrying case and operators manual.
- WS144-30 remote unit for wires 16-30.
- Made in U.S.A.



## 1300 Electronic Protector

- Single outlet surge Volt 15 Amp AC
- 3 Stage EMI/RFI protection

## 1310 Single Stage EMI/RFI Protection

Specifications:	1300	1310
Voltage	6000 Volts	6000 Volts
Current	4500 Amps	4500 Amps
Response time	5 Nano Sec.	5 Nano Sec.
Energy dissipation	114 Joules	38 Joules
Performance indicator	Neon Light	MOV



## WL140 Wire Length Meter

The ETCON WL140 quickly measures any reel of wire from 24 AWG to 1000 MCM gauge stranded and solid in lengths of 15' to 20,000'. The unit is useful for electrical contractors, utilities and distributors for determining inventories of wire. The operator selects gauge, aught or MCM mode, selects copper or aluminum mode, attaches the alligator clips to the end of the wire being measured and presses "LENGTH" button to determine the length of wire.

- Microprocessor based meter designed to an accuracy of + or - 2% with 4 1/2 digit LCD readout.
- Direct readout for both copper and aluminum wire.
- Automatic internal adjustment for ambient temperature.
- Unique calibration mode enables measurement of non-standard gauge wire.
- Only one alligator clip attachment required at each end of wire.
- Field replacement of batteries.
- Insulation-piercing probe assemblies are included enabling use without stripping insulation.
- Impact resistant carrying case, alligator clip assemblies, insulation-piercing assemblies, batteries and new probe leads included.
- Made in U.S.A. Patent Pending



## ML800 Lock-Off Multiple Lockout

- Prevents accidental startup of equipment while repairs are in progress.
- Corrosive-resistant materials excellent for environments requiring frequent washdown, salt spray areas and outside applications.
- Accommodates up to six padlocks
- All must be removed before startup.
- Dimensions: 3" diameter, 3/8 thick.



## DM100 Pocket Multi-Meter

- Auto Ranging Digital Multi-Meter
- 4-600 VAC/DC
- 3.5" High Contrast LCD
- 4 DC Volt and 2 AC Volt Ranges
- Overload Protection on All Ranges

## DM100-CD 10 DM100 IN COUNTER DISPLAY



## FT870 "proFish" Fish Tape

- Nylon non-conductive fish tape.
- Extendable 50' sections.
- Field repairable.
- 350 lbs. pulling strength.
- High visibility orange.
- Includes extender coupling.



## MT810 Cube Tap

- Transforms one 120 VAC outlet into three.
- Heavy duty construction.
- High visibility orange color for quick identification.
- UL listed.
- CSA approved.

See Back Cover For Local Sales Representatives



# SPLICE KITS

## "proSplice™" UL Listed Splice Kits

- Direct burial splice enclosure kit.
- No heat shrink tubing or epoxy needed.
- Fast, clean, reusable.
- A twist of the wrist and a water tight mechanical connection is completed.

- Rated to 600V.
- UL listed.
- BellCore audited.
- CSA.
- Made in U.S.A.



- **SK1** - 14-10 AWG UF Cu/Sol/Str. Includes 4 butt splices and grommets.
- **SKS** - proSplice shells only.
- **SK1-FD** - 10 SK1 in counter display



- **SK3** - 6-1 AWG USE Cu/Al Wire OD size .32" - .53" Includes connector and grommets.
- **SK3-FD** - 10 SK3 in counter display



- **SK1C** - 14-10 AWG UF Cu/Sol/Str. Includes classic SK830 Quad connector and grommets.
- **SK1C-FD** - 10 SK1C in counter display



- **SK4** - 1/0 USE to 350 MCM Wire OD size .180" - .320" Includes grommets. Connector not included.
- **SK4-FD** - 10 SK4 in counter display



- **SK2** - 12-6 AWG USE Cu/Al Wire OD size .180" - .320" Includes connector and grommets.
- **SK2-FD** - 10 SK2 in counter display



- **PK1** - 2-6 pair buried phone wire, coaxial RG6 & RG59. Includes grommets. Connector not included.
- **PK1-FD** - 10 PK1 in counter display

*Great for use with aquatic systems, fountains, landscaping, ponds, etc.*



## "proSplice™" Extenders

- Increases cavity size of all proSplice kits. Allows for larger coax connectors and additional phone wires to be terminated. Available in 4", 6", 8" and 10" lengths.
- Extenders come with SKS shells. Grommets not included.
- Catalog #'s are: EXT4, EXT6, EXT8, EXT10.
- UL listed.
- BellCore audited.
- CSA.
- Made in U.S.A.



## SKUF

- Direct burial splice enclosure kit for #14/2 and #12/2 UF wire.
- Includes grommets and 3-butt splice connectors.
- Made in U.S.A.

## SKU1

- Direct burial splice enclosure kit for #12 - #10 AWG wire.
- Includes grommets and 1-butt splice connectors.
- Made in U.S.A.

## SKU2

- Direct burial splice enclosure kit for #8 - #2 AWG wire.
- For use with compression connector.
- Includes grommets.
- Compression connector not included.
- Made in U.S.A.



## "proSplice™" Taps

- 3 or 4 wire taps with no tape or heat shrink needed.
- T-splice with single in and double out.
- Four wire splice with double in and double out.
- Dead-end splice available.
- UL listed.
- BellCore audited.
- CSA.
- Made in U.S.A.



## SKCX

- Direct burial splice enclosure kit for coaxial RG6, RG11, RG59.
- Dimensions 6" long X 3/4" diameter
- Includes grommets.
- UL listed.
- Made in U.S.A.
- **SKCX-FD** - 10 SKCX in counter display

The ETCON SKCX splice kit allows the technician to complete a direct burial splice for RG6, RG11 and RG59 wires, and 2-4 pair phone wires.

The splice enclosure is quick and easy to install. No special tools are required, no mixing of compounds, laborious taping, messy gels, or dangerous, "heat shrinking" flames. The splice enclosures are completely re-enterable for visual inspection. The splice enclosure is manufactured with an engineering grade polymer-based outer housing that resists moisture, petroleum-based products, chemicals and rodents. The SKCX provides additional pullout strength for added splice quality.

**FREE  
Display  
Case**

See back cover for details



# SPLICE KITS



## Replacement Grommets

- Varying sizes for multiple applications.
- For use with proSplice shells and extenders.
- Sizes available for: RG6, RG11, RG59 coax wire, 2-4 pair telephone wire, #14/2, #12/2 UF wire, #12-#10 AWG wire, #8-#2 AWG wire
- Made in U.S.A.

No.	Min. Wire O.D.	Max. Wire O.D.
G1	.250"	.410"
G2	.180"	.32"
G3	.32"	.53"
G4	.53"	.78"
G5	.780"	.960"



## Street Lighting Grommets

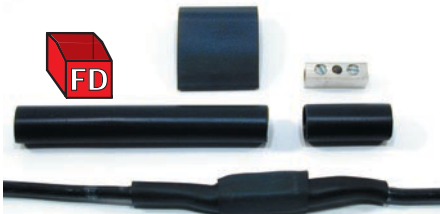
- Varying sizes for multiple applications.
- Made in U.S.A.



## SK830 UL Listed UF Splice Kit

- 14 to 8 gauge copper wire rated to 600V.
- For direct underground burial of UF wire.
- Includes 4 conductor splice connector.
- Includes the UL listed shrink tubing required for application.
- Unit is the FIRST UL listed Splice Kit for direct underground burial UF type wire.

**SK830-FD 10 SK830 IN FLOOR DISPLAY**



## SK831 UL Listed Underground Splice Kit

- 8 to 2 gauge copper/aluminum wire rated to 600V.
- For direct underground burial.
- Includes single conductor mechanical connector.
- Includes UL listed shrink tubing required for splice.
- Unit is First UL listed Splice Kit for direct burial for 8 to 2 gauge Cu/Al wire.

**SK831-FD 10 SK831 IN FLOOR DISPLAY**



## SK832 UL Listed Underground Splice Kit

- 1 gauge to 250 MCM Cu/Al wire rated to 600V.
- For direct underground burial.
- Includes single conductor mechanical connector.
- Includes UL listed shrink tubing required for splice.
- Unit is First UL listed Splice Kit for direct burial to #1 to 250 MCM Cu/Al wire.

**SK832-FD 10 SK832 IN FLOOR DISPLAY**



## SK841/SK842 UL Listed Connector System

**SK841** - 8 to 2 gauge Cu/Al wire rated to 600v.

**SK842** - 1 gauge to 250 MCM Cu/Al wire rated to 600v.

- Includes single conductor mechanical connection.
- Includes UL listed shrink tube required in making connector system splice.



**= Display Pack with  
FREE Floor Display**  
See back cover for details

# LIGHTING POSTS



## Landscape Lighting Post

- Ready to use right out of the box. No assembly Required.
- UL Listed. Made in the USA.
- Save time and money by reducing your installation cost.
- Includes cap, post and stabilizer grid.
- Uniquely engineered for vertical and horizontal stabilization.
- Decorative, octagon-shaped cap.
- Made of shatter proof PVC which is corrosion and UV resistant.
- For use with UF cable or conduit. No need for weatherproof boxes.
- Flat slanted bottom to accept cable at different depths.
- Available in Black, White and Verde Green.



LS904VG Verde Green

LS904W White

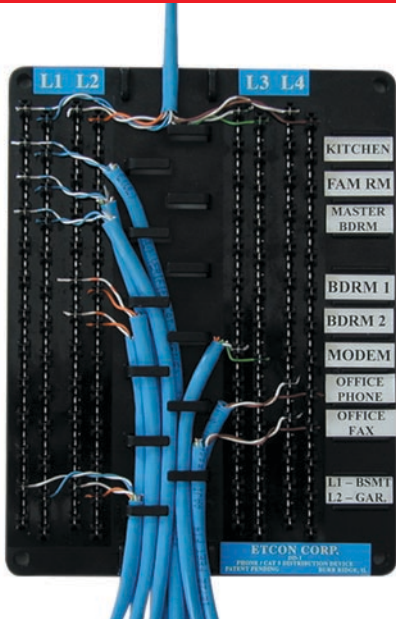
LS904B Black

Light Fixture Sold Separately.

See Back Cover For Local Sales Representatives



# VOICE - DATA - VIDEO



## **DD1** PHONE DISTRIBUTION DEVICE FOR RESIDENTIAL AND SOHO PHONE INSTALLATIONS.

- Accommodates up to 4 lines.
- 12 outlets/stations per line.
- No bridging clips required.
- For use with Cat. 5E/5/3 phone wire.
- For use with 110 punch or push down tool.

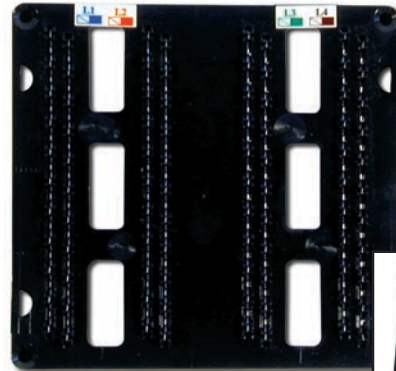
**DD1K** DD1 WITH THE DD110T PUSH DOWN TOOL.

**1C** COVER FOR DD1 PHONE DISTRIBUTION DEVICE.

**DD1C** DD1 AND COVER COMBO.

**DD1CK** DD1, COVER, AND THE DD110T PUSH DOWN TOOL.

**DD1-FD** 10 DD1 IN FLOOR DISPLAY



## **DD3** PHONE DISTRIBUTION DEVICE FOR RESIDENTIAL AND SOHO PHONE INSTALLATIONS.

- Accommodates up to 4 lines.
- 10 outlets/stations per line.
- No bridging clips required.
- Designed to be wired from the back for clean, organized appearance.
- For use with 110 punch or push down tool.

**DD3K** DD3 WITH THE DD110T PUSH DOWN TOOL.

**3C** COVER FOR DD3 PHONE DISTRIBUTION DEVICE.

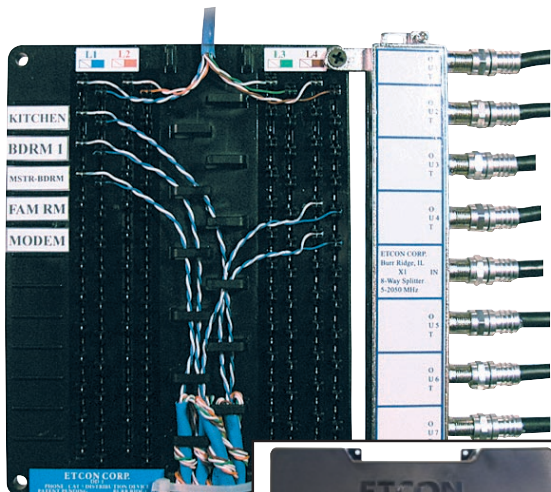
**DD3C** DD3 AND COVER COMBO.

**DD3CK** DD3, COVER, AND THE DD110T PUSH DOWN TOOL

**DD3CX** DD3, COVER, AND 4 WAY VIDEO SPLITTER.

**DD3CXNS** DD3, 4-WAY VIDEO SPLITTER, DATA NETWORK, SECURITY AND COVER COMBO.

**DD3-FD** 10 DD3 IN FLOOR DISPLAY



## **DD1X1** PHONE DISTRIBUTION DEVICE WITH 8-WAY 2050 MHZ (2GHZ) SPLITTER FOR RESIDENTIAL AND SOHO PHONE AND VIDEO INSTALLATIONS.

- Accommodates up to 4 lines.
- Allows for up to 48 stations or phone home runs.
- For use with 110 punch or push down tool.
- Internally bridged and NO bridging clips needed.
- 8-way 2050 MHz (2Ghz) splitter for CATV cable runs.

**DD1X1C** DD1X1 WITH COVER

**DD1X1K** DD1X1 WITH THE 110 PUSH DOWN TOOL.

**DD1X1CK** DD1X1 WITH COVER and PUSH DOWN TOOL.

**DD1X1-N8** DD1X1 WITH 8 POSITION NETWORK CARD.

**X1C** COVER FOR DD1X1 PHONE DISTRIBUTION DEVICE.

**DD1X1-FD** 10 DD1X1 IN FLOOR DISPLAY

**DD1X1C-FD** 10 DD1X1C IN FLOOR DISPLAY



**FREE**  
**Floor Display**  
See back cover for details



# VOICE - DATA - VIDEO



## DD3X3

### MODULAR PHONE AND VIDEO STRUCTURED WIRING DEVICE WITH STANDOFFS

- Accommodates up to 4 incoming phone lines with 10 outgoing lines for each line.
- 1" standoffs allow the DD3x3 to sit off the wall allowing wiring from the back for a clean organized appearance.
- 8-way 2050MHz (2Ghz) splitter for CATV cable runs.
- Cable runs can be labeled for easy identification.
- For use with 110 punch or push down tool.
- Internally bridged and NO bridging clips needed.
- Modular design for adding components as needed.
- A very economical structured wiring device.

**DD3X3K** DD3X3 WITH THE 110 PUNCH/PUSH DOWN TOOL.

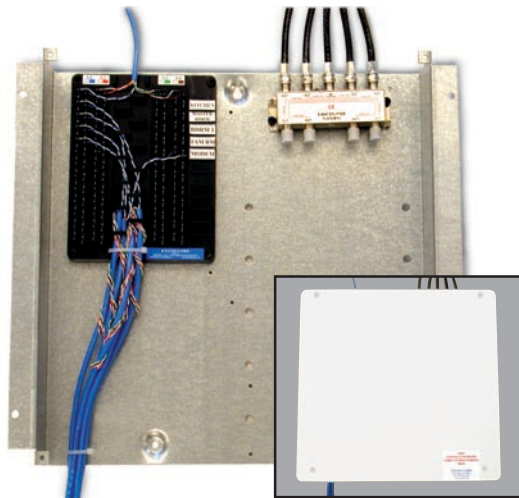
**DD3X3C** DD3X3 WITH COVER.

**DD3X3CK** DD3X3 WITH COVER & 110 PUNCH/PUSH DOWN TOOL.

**X3C** COVER FOR DD3X3

**DD3X3-FD** 10 DD3X3 IN FLOOR DISPLAY

**DD3X3C-FD** 10 DD3X3C IN FLOOR DISPLAY



## DD5

### STRUCTURED WIRING CENTER

- Modular design enables customization for each housing requirement.
- Designed for use with the Etcon DD1 (Cat. 5) or the DD3 (Cat.5e). The most efficient 110 phone distribution block on the market.
- Allows up to 96 stations or phone home runs (24 for each incoming line) with additional phone block.
- Capabilities for 8 Video Outputs (5-2050mhz).
- Data Network Hubs available for upgrade (N4/N8)
- Custom Enclosure has open top and bottom for easy wiring and can be surface or flush mounted. Keyhole cover for quick and easy access.
- Enclosure designed with extra positions to accommodate additional modules making it completely upgradable for future requirements.
- Dimensions 14.25"x15"x3.5".

**DD5 INCLUDES:** DD1, X8 (8 WAY SPLITTER), ENCLOSURE AND COVER

**DD5E INCLUDES:** DD3, X8 (8 WAY SPLITTER), ENCLOSURE AND COVER.



## DD6

### Structured Wiring Center

- Fully Enclosed Box.
- 6 - 1.750" Knock-Outs.
- 1 - Electrical Knock-Out.
- Can be Mounted to the Stud or the Wall (Surface or Flush Mount).
- Modular Design enables customization for each housing requirement.
- Designed for use with most manufactures Video/Phone/Network Inserts.
- Designed for use with the Etcon DD1. The most efficient 110-phone distribution module.
- Designed for use with the Etcon X1 8-Way 2GHz Video Splitter with all ports on 1 side and labeling capabilities.
- Dimensions: 14.25 X 9.00 X 3.50.

**DD6 INCLUDES** BOX, COVER, DD1, AND X1

**DD6B** INCLUDES BOX AND COVER ONLY

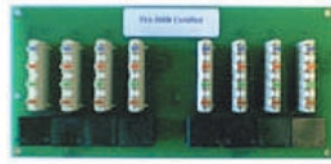
See Back Cover For Local Sales Representatives



# VOICE - DATA - VIDEO



**X1**  
8-WAY VIDEO SPLITTER 2GHz.  
May be used separately or added to DD1  
as a modular component.



**N4 Data Network**  
4-Position

**N8 Data Network**  
8-Position



## RT100 Resi-Test Pro

- Shows test results clearly and accurately on a large LCD display with dedicated icons
- Tests CAT3, CAT5/6 cable for opens, shorts, miswires, reversals, and IDs remote outlets
- Tests telephone line hook-ups and senses voltage on cable
- Checks CATV/cable systems opens and short conditions and location
- Built-in tone generator traces wires in walls
- Built-in remote identifier has multiple ports for all cable types
- Supports up to 20 coax remotes and 20 CAT5 room identifiers for larger, more complex wiremapping jobs
- Cable accessories allow testing on security system wiring

## RT100K Resi-Test Pro Kit

- 1-Resi Test Pro
- 5-Coax Remote Ids
- 5-RJ45 Remote Ids
- 2-RJ11/12 Patch Cords
- 2-RJ45 Patch Cords
- 1-Alligator Clip
- 1-Cooler Bag Carrying Case



**X3**  
8-WAY VIDEO SPLITTER 2GHz.  
May be used separately or added to DD3  
as a modular component.

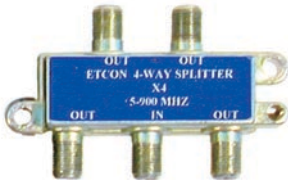


**DD110T**  
PUSH DOWN TOOL DESIGNED FOR USE  
WITH ETCON DD1, DD2, DD3 AND 110  
BLOCKS.



**PDT110**

- 110 Impact Punch Down Tool
- Includes 110/66 Blade
- Replacement Blade Part # HT-14A



**X4**  
4-WAY VIDEO SPLITTER 5-900MHZ.



**X8**  
8-WAY VIDEO SPLITTER 5-2050MHZ.



## CX1 INSTALLATION TOOL FOR MOUNTING F (COAX) CONNECTORS.

- Pushes back coax shielding.
- Mounts connector on coax wire over coax shielding to proper depth.
- Eliminates sore fingers.
- Belt or shirt pocket clip.

**CX1-CD 10 CX1 IN COUNTER DISPLAY**



**CS100**  
Rotary COAX Stripper

- RG6/Quad, RG58, RG59/62.
- Mounts connector on coax wire over coax shielding to proper depth.
- Eliminates sore fingers.
- Belt or shirt pocket clip.

**CS100-CD 10 CS100 IN COUNTER DISPLAY**



**CT100**  
CATV "F" Compression Tool.

- Pushes back coax shielding.
- Mounts connector on coax wire over coax shielding to proper depth.
- Eliminates sore fingers.
- Belt or shirt pocket clip.

**CT100-CD 10 CT100 IN COUNTER DISPLAY**

## FREE Display Case

See back cover  
for details



# proBIT STEP DRILLS and AUGER BITS

## proBit Step Drills

### Features:

- High speed steel.
- Titanium coated.
- Quick change hex shanks.
- Non-slip tip.
- Heavy-duty 2 flute design.
- Size identification on each step.
- Split tip for faster starts and more control.
- No pilot hole need.

### Cuts:

- Metal
- Copper
- Brass
- Wood
- Plastic
- Aluminum
- Laminates
- Stainless Steel



**SD1 1/8" - 1/2"**

13 step sizes and 1/4" hex shank

**SD1-CD** 10 SD1 IN COUNTER DISPLAY



**SD4 3/16" - 7/8"**

12 step sizes and 3/8" hex shank

**SD4-CD** 10 SD4 IN COUNTER DISPLAY



**SD2 3/16" - 1/2"**

6 step sizes and 1/4" hex shank

**SD2-CD** 10 SD2 IN COUNTER DISPLAY



**SD5 1/14" - 1 3/8"**

10 step sizes and 3/8" hex shank

**SD5-CD** 10 SD5 IN COUNTER DISPLAY



**SD3 1/4" - 3/4"**

9 step sizes and 3/8" hex shank

**SD3-CD** 10 SD3 IN COUNTER DISPLAY



**SD6 7/16" - 1 1/8"**

12 step sizes and 3/8" hex shank

**SD6-CD** 10 SD6 IN COUNTER DISPLAY

## Single Edge Ship Auger Bits

- Wear Resistant
- Easily goes through Nails and Staples
- Self Feeding Screw Point Pulls the Bit Through The Wood
- Available in 9" and 18" Lengths

Cat#	Diameter	Length
<b>AB1</b>	3/4"	9"
<b>AB2</b>	3/4"	18"
<b>AB3</b>	7/8"	9"
<b>AB4</b>	7/8"	18"
<b>AB5</b>	1 1/8"	9"
<b>AB6</b>	1 1/8"	18"

